



■ Gastrointestinal Services at Stony Brook

FALL 2011

Referral Guide

■ INTERNAL MEDICINE

Advanced GI Procedures

Juan Carlos Bucobo, MD
Jonathan Buscaglia, MD
Satish Nagula, MD
Isabelle von Althen, MD
(631) 444-5220 (tel)
(631) 444-5225 (fax)

Colon Cancer Screening

Chris Lascarides, MD
(631) 444-5220 (tel)
(631) 444-5225 (fax)

Crohn's & Colitis

Ramona Rajapakse, MD
Robert Richards, MD
(631) 444-5220 (tel)
(631) 444-5225 (fax)

Esophagus

Gina Sam, MD, MPH
(631) 444-5220 (tel)
(631) 444-5225 (fax)

General GI

Juan Carlos Bucobo, MD
Jonathan Buscaglia, MD
Asim Khokhar, MD
Chris Lascarides, MD
Satish Nagula, MD
Ramona Rajapakse, MD
Robert Richards, MD
Basil Rigas, MD
Gina Sam, MD, MPH
Isabelle von Althen, MD
(631) 444-5220 (tel)
(631) 444-5225 (fax)

GI Oncology (colorectal)

Marisa Siebel, MD
(631) 638-1000 (tel)
(631) 638-0915 (fax)

GI Oncology (upper)

Marisa Siebel, MD
(631) 638-1000 (tel)
(631) 638-0915 (fax)

Hepatology

Asim Khokhar, MD
(631) 444-5220 (tel)
(631) 444-5225 (fax)

Irritable Bowel Disease

Ramona Rajapakse, MD
Robert Richards, MD
(631) 444-5220 (tel)
(631) 444-5225 (fax)

Motility

Gina Sam, MD, MPH
(631) 444-5220 (tel)
(631) 444-5225 (fax)

■ INTERNAL MEDICINE

(continued)

Women's GI Health

Isabelle von Althen, MD
(631) 444-5220 (tel)
(631) 444-5225 (fax)

■ PATHOLOGY

Surgical Pathology - GI & Liver

Bernard Lane, MD
Meenakshi Singh, MD
Sui Zee, MD
(631) 444-2221 (tel)
(631) 444-3149 (fax)

■ PEDIATRICS

GI/Hepatology

Anupama Chawla, MD
Grace Gathungu, MD
Rupa Gill, MD, MPH
Jeffrey Morganstern, MD
Janet DiFalco, NP
Deborah Salvatore, RD
Katherine Usmani, NP
(631) 444-KIDS (5437)
(631) 444-8115 (office)
(631) 444-6016 (fax)

■ RADIATION ONCOLOGY

GI Oncology (colorectal)

Bong S. Kim, MD
Tae L. Park, MD
(631) 444-2210 (tel)
(631) 444-9782 (fax)

GI Oncology (upper)
Bong S. Kim, MD
Allen G. Meek, MD, FACR
Tae L. Park, MD
Edward S. Valentine, MD, MBA
(631) 444-2210 (tel)
(631) 444-9782 (fax)

■ RADIOLOGY

Abdominal (Body Imaging)

Almas Abbasi, MD
Matthew Barish, MD
Nancy Budorick, MD
Robin P. Cunningham, MD
Seth O. Mankes, MD
Maryanna Mason, MD
Robert Perone, MD
G. Lucy van de Vegte, MD
Zengmin Yan, MD
Marlene L. Zawin, MD
(631) 638-2121 (tel)
(631) 638-2323 (fax)

Computed Tomography

Marlene L. Zawin, MD
(631) 638-2121 (tel)
(631) 638-2323 (fax)

■ RADIOLOGY

(continued)

Diagnostic Radiology

Almas Abbasi, MD
Americo Fiore, MD
Donald Harrington, MD
Maryanna Mason, MD
William H. Moore, MD
(631) 638-2121 (tel)
(631) 638-2323 (fax)

Interventional Radiology

John A. Ferretti, MD
Ajay Malhotra, MD
Valmore Suprenant, MD
Carl Tack, MD
(631) 444-2506 (tel)
(631) 638-2323 (fax)

Pediatric Body Imaging

Dvorah Balsam, MD
(631) 638-2121 (tel)
(631) 638-2323 (fax)

■ SURGERY

Colon & Rectal Surgery

Roberto Bergamaschi, MD, PhD
(631) 638-1000 (tel)
(631) 444-6348 (fax)

Roberto Bergamaschi, MD, PhD

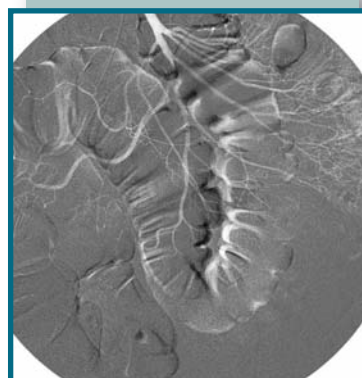
Paula I. Denoya, MD
William B. Smithy, MD
(631) 444-4545 (tel)
(631) 444-6348 (fax)

GI Surgical Oncology (upper)

Philip Q. Bao, MD
Kevin T. Watkins, MD
(631) 444-8086 (tel)
(631) 444-7871 (fax)

Pediatric GI Surgery

Thomas K. Lee, MD
Richard J. Scriven, MD
(631) 444-4545 (tel)
(631) 444-8824 (fax)



Mesenteric Angiogram of the Colon

Practice Locations

Internal Medicine

Stony Brook Internists
3 Technology Drive, Suite 300
East Setauket, NY 11733-9252

Stony Brook University
Cancer Center
3 Edmund D. Pellegrino Road
Stony Brook, NY 11794-9445

Pathology

Stony Brook Pathologists
Stony Brook University Hospital
Level 2
Nicolls Road
Stony Brook, NY 11794-7025

Pediatrics

Stony Brook Children's Service
37 Research Way
East Setauket, NY 11733-8111

Stony Brook Primary Care
2701 Sunrise Highway
Islip Terrace, NY 11752-8111

15 W. Second Street
Riverhead, NY 11901-8111

Radiation Oncology

Stony Brook Radiation Oncology
Stony Brook University
Medical Center
Nicolls Road
Level 2
Stony Brook, NY 11794-7028

Stony Brook University
Cancer Center
3 Edmund D. Pellegrino Road
Stony Brook, NY 11794-7028

Radiology

Stony Brook Radiology
Imaging Center
3 Edmund D. Pellegrino Road
Stony Brook, NY 11794-9462

Stony Brook University Hospital
Level 4
Nicolls Road
Stony Brook, NY 11794-8460

Stony Brook University Hospital
Outpatient Services Center
225 West Montauk Highway
Hampton Bays, NY 11946

Surgery

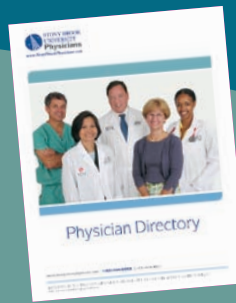
Stony Brook Surgical Associates
Surgical Care Center
37 Research Way
East Setauket, NY 11733-9200

Stony Brook University
Cancer Center
3 Edmund D. Pellegrino Road
Stony Brook, NY 11794-9450

222 Middle Country Road, Suite 209
Smithtown, NY 11787

■ Gastrointestinal Services at Stony Brook

Referral Guide (continued from front)



PHYSICIAN DIRECTORY

Need one for your office?
Print an up-to-date directory at
www.stonybrookphysicians.com

Ask The Experts:



Satish Nagula, MD
Assistant Professor of Medicine
Director, Endoscopy



Gina Sam, MD
Assistant Professor of Medicine
Director, Anal Motility

Q.

What is Barrett's Esophagus?

A.

You may never have heard of Barrett's esophagus, but if you have gastroesophageal reflux disease (GERD), you're at risk, and may want to learn about the condition. Barrett's esophagus is a premalignant condition that occurs when the cells of the esophagus are replaced by precancerous cells. It doesn't mean you have cancer, but you could develop it over time. Esophageal cancer is difficult to treat and carries a poor outcome and a greatly compromised quality of life, so preventing it is key, which is exactly what a new procedure at Stony Brook University Medical Center called radiofrequency ablation can do.

Performed on an outpatient basis, this minimally invasive procedure uses highly targeted heat energy to irradiate and eliminate the precancerous tissue in the esophagus. Studies show that this treatment completely eliminates the precancerous tissue associated with Barrett's in 98.4 percent of patients, and that it remains effective for at least five years - the "magic number" when it comes to being declared cancer-free.

Stony Brook is currently the only hospital in Suffolk County to offer this treatment, thanks to the recruitment last year of Satish Nagula, MD, and Gina Sam, MD, MPH, to the Division of Gastroenterology and Hepatology. Each have advanced training and experience in the procedure. "This is a procedure with no significant drawbacks," says Dr. Nagula. "It is safe and effective with no side effects other than a small bit of discomfort in the chest that disappears after a few days. Most important, it really does eliminate the precancerous cells."

Adds Dr. Sam, "Nearly everyone with the condition is eligible for the procedure. It's that safe. As with everything we do, though, we take an individualized approach with each patient."

The Reflux Index

People who have GERD - in particular Caucasian males over age 40 - are at high risk for developing Barrett's esophagus. Here are the symptoms to watch for:

- Burning sensation after eating certain foods
- Sour taste in mouth
- Excessive burping
- Chest pressure or chest pain
- Burning sensation in stomach or chest

Barrett's esophagus has no symptoms. It is usually discovered only during an endoscopic evaluation of long-term reflux. At Stony Brook, evaluations take place in the Endoscopy Center, which has been recognized by the American Society for Gastrointestinal Endoscopy (ASGE) for promoting quality and safety in endoscopy.

Esophageal cancer rates are growing rapidly, and the number one risk factor is long-term reflux. If you've had reflux for six months or more, check with your physician, who can refer you to a gastroenterologist or Stony Brook's endoscopy program for evaluation.

For more
"Ask the Experts"
go to
www.stonybrookphysicians.com